

عاجل وهام

سلمه الله
سلمه الله

صورة مع التحية لسعادة رئيس الغرفة التجارية
سعادة امين عام الغرفة التجارية
السلام عليكم ورحمة الله وبركاته،

إشارة إلى توصية اللجنة السعودية السويدية المشتركة الثانية والتي عقدت في العاصمة السويدية ستوكهولم بتاريخ 7-8 أكتوبر ٢٠٢١م والمتضمنة مبادرة إقامة أيام سعودية سويدية لقطاع الأعمال في اكسبو دبي 2020 خلال الفترة 16-17 يناير 2022م بمدينة دبي.

أود احاطة سعادتكم عن تنظيم أعمال الأيام السعودية السويدية بهدف التواصل ولقاء الشركات السعودية السويدية وبمشاركة (60) شركة سويدية، (مرفق قائمة الشركات السويدية المدعوة).

أمل التكرم بالاطلاع وتوجيه المختصين لديكم بالتعميم على مشتركي غرفتكم الموقرة وللمشاركة بمتكمن التسجيل من خلال الرابط التالي :-
[Saudi - Sweden Day \(Jan 16th -17th 2022\) A Platform for Business Opportunities \(office.com\):](https://www.saudi-sweden-day.com)

وتقبلوا اطيب تحياتي وتقديري،

حفيد

الأمين العام المكلف

حسين بن عبدالقادر العبدالقادر

الغرفة التجارية الصناعية بمنطقة القصيم

رقم الوارد: 4539
التاريخ: 11-01-2022م - 1443/06/08هـ
المرفقات: 13
نوع المرفق: شهادة التصدير
الجهة: اتحاد الغرف السعودية



www.qcc.org.sa

مرفق عدد من العروض المقترحة للاقامة.

المملكة العربية السعودية
رقم الهاتف: 011 4411111
رقم الفاكس: +966 11 4411111
البريد الإلكتروني: info@qcc.org.sa

سليم



المملكة العربية السعودية
Kingdom of Saudi Arabia
EXPO 2020 DUBAI

The Ambassador of the Kingdom of Sweden in Saudi Arabia

H.E. Mr. Niclas Trouvé

&

Commissioner General of the Kingdom of Saudi Arabia Pavilion

Mr. Hussain Hanbazazah

Cordially Invites You to Attend the

SAUDI-SWEDEN DAYS at Expo 2020

To create mutual opportunities for networking, share knowledge,
highlight innovation and discuss areas of mutual business interest
and potential investment

[Register Here](#)

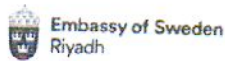


Date:
16 January 2022

Venue:
Sweden Pavilion
Expo 2020 Dubai
Sustainability District

Date:
17 January 2022

Venue:
KSA Pavilion
Expo 2020 Dubai
Opportunity District



Company
ABB
Hitachi Energy
SSAB
Sweroad
AlfaLaval
Ericsson
EF
Sandvik
Atlas Copco
Afray
IKEA
H&M
Getinge
AstraZeneca
Electrolux
Elekta
Envac
Tetra Pak
Volvo Cars
Scania
ADB Safegate
Arla Foods
Assa Abloy
Axis Communications
Blueair
Brighter AB
Brokk
Camfil Clean Air Solutions
Consilium AB
Dafo Vehicles
Daniel Wellington
Dometic

Company
ESAB AB
Fagerhult AB
FundedByMe
GAC
GHP
Gunnebo
Hexagon
Husqvarna
Kahrs
Nordic Homeworks
Nynas
Outokumpu
Perstorp
Quant Middle East
Rejlers
SAAB
Securitas
Sensys
SKF
Sobi
Spotify
SABB
Systemair AB
Terraco
Treilleborg Group
TSS
Volvo Buses
Volvo Trucks
Quant Gulf
Mölnycke
Diaverum
Sweco

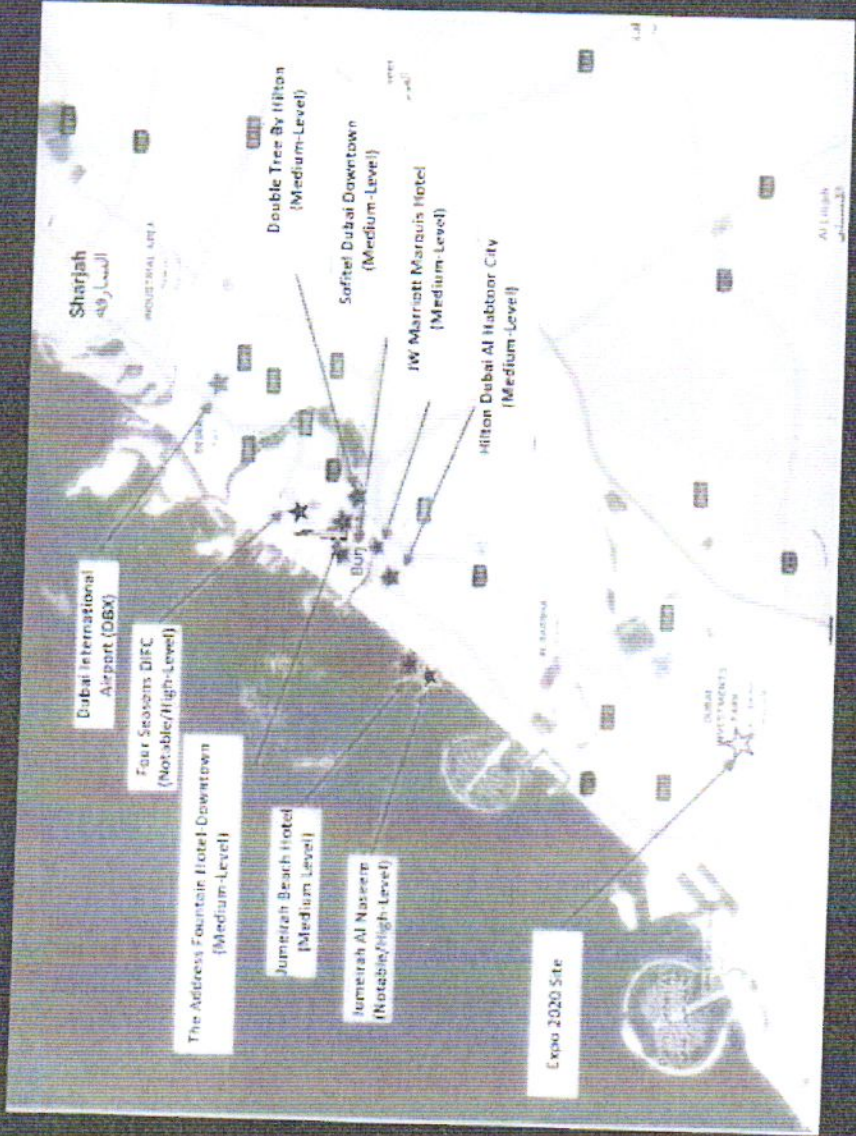
Duni
East Capital
Ekman & Co AB
Elof Hansson AB

Wellspect
Midroc (Granitor)
SEB
Albariq
Assa Abloy
Stora Enso
Breas

KSA Pavilion at Expo 2020 Dubai Specialist Programs

KSA Hotel Recommendations
02.01.2022

المملكة العربية السعودية
Kingdom of Saudi Arabia
EXPO 2020 DUBAI



Jumeirah Al Naseem (5*)

Location: Jumeirah St- Umm Suqeim 3- Dubai
Contact: +971 4 366 8888

Transfer Times:

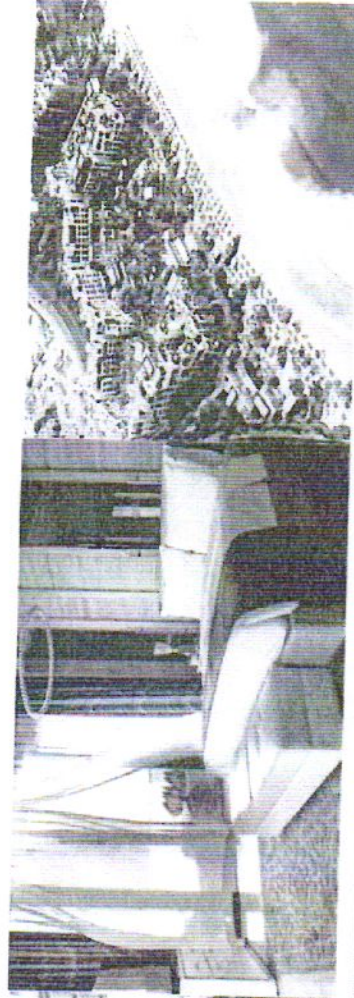
Distance to Airport: 24 Min.

Distance to Expo 2020: 28 Min.

Jumeirah Al Naseem is located in the Umm Suqeim district in Dubai. The resort has a Spa, hot tub and water sports facilities, and guests can enjoy a meal at the restaurant.

Every room at this resort is air conditioned and has a flat-screen TV with cable channels. Some units feature a seating area for your convenience. Certain units include views of the sea or garden. All rooms are equipped with a private bathroom fitted with a bath. For your comfort, you will find bathrobes, slippers and free toiletries.

You will find free shuttle service and hairdressers at the property.



المملكة العربية السعودية
Kingdom of Saudi Arabia
EXPO 2020 DUBAI

Four Seasons DIFC (5*)

Building 9, Unit GV09, Level GF Gate Village,
Dubai
Contact : +971 4 506 0000

Transfer Times:

Distance to Airport: 17 Min
Distance to Expo 2020: 31Min

Conveniently located in the heart of Dubai's business and financial hub, DIFC, lies the Four Seasons Hotel Dubai International Financial Centre. It offers a spectacular glass walled outdoor swimming pool and a sun terrace.

Four Seasons Hotel DIFC features four Dubai restaurants, bars and lounges including Mina Brasserie, Luna Sky Bar, Penrose Lounge and Cigar lounge Churchill Club, all ideal for discussing business, entertaining colleagues or relaxing with friends. Service at the poolside terrace and in room service is available.



المملكة العربية السعودية
Kingdom of Saudi Arabia
EXPO 2020 DUBAI

The Address Fountain Hotel (5*)

Location: Al Ohood Street - Sheikh Mohammed bin Rashid Blvd - Dubai
Contact: +971 4 245 8888

Transfer Times:
Distance to Airport: 17 Min.
Distance to Expo 2020: 36 Min.

The Address Fountain Hotel is a 5-star. Luxury hotel with 6 restaurants, near Dubai Mall. The newest hotel from the Address Hotels group.

All rooms are fitted with air conditioning, a flat-screen TV with satellite channels, a kettle, a bidet, a hairdryer and a desk. With a private bathroom fitted with a shower and free toiletries, rooms at the hotel also boast free WiFi. The units will provide guests with a wardrobe and a coffee machine.

Dubai Mall is 550 m from the accommodation, while Burj Khalifa is 3.5 km from the property. The nearest airport is Dubai International Airport, 14 km from Address Fountain Views



المملكة العربية السعودية
Kingdom of Saudi Arabia
EXPO 2020 DUBAI

Jumeirah Beach Hotel (5*)

Jumeirah St - Umm Suqeim Umm Suqeim 3 -
Dubai

Contact: +971 4 348 0000

Transfer Times:

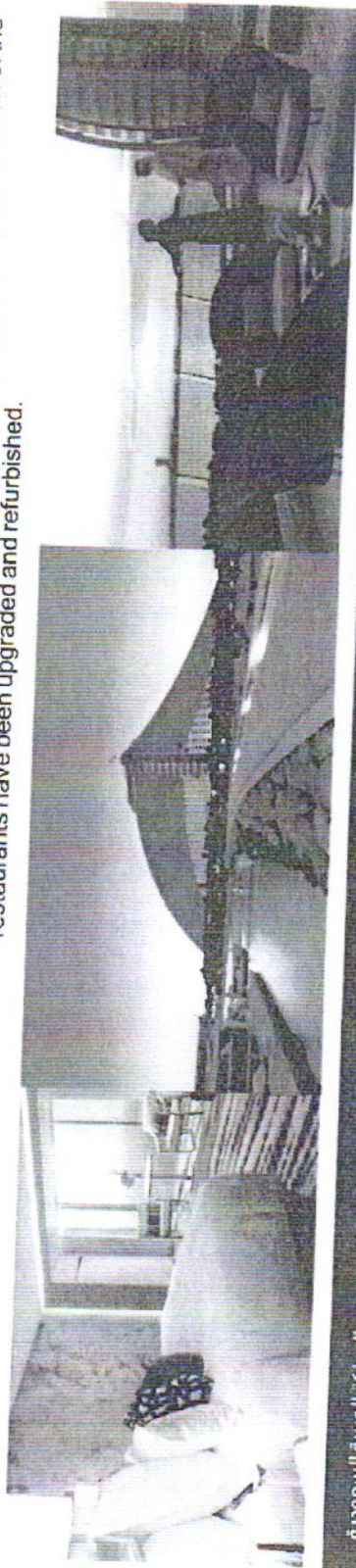
Distance to Airport: 24 Min

Distance to Expo 2020: 28 Min

This 5-star luxury Dubai hotel has a private beach and features over 10 restaurant and bars, 5 swimming pools and a climbing wall. Jumeirah Beach Hotel's rooms are spacious and have floor-to-ceiling windows looking out over the Arabian Gulf. Each features a Widescreen Interactive HD LCD TV, evening turndown service and free WiFi access.

Jumeirah Beach offers a wide variety of international cuisine including Argentinean and Italian. Many restaurants have a children's menu. Refreshments are offered at the rooftop Lounge. Guests can enjoy refreshments and happy hours at Uptown bar overlooking the city skyline.

The hotel has recently been renovated and all the rooms, public spaces and few of the restaurants have been upgraded and refurbished.



المملكة العربية السعودية
Kingdom of Saudi Arabia
EXPO 2020 DUBAI

Hilton Dubai Al Habtoor City (5*)

Location: Al Habtoor City - Sheikh Zayed Rd- Dubai

Contact: +971 4 437 3333

Transfer Times:

Distance to Airport: 15 Min.

Distance to Expo 2020: 29 Min.

Offering a year-round outdoor pool and terrace, Hilton Dubai Al Habtoor City is located in the Sheikh Zayed Road district in Dubai, at the Dubai Water Canal, 2.5 km from Burj Khalifa. The hotel is also directly connected to La Perle by Dragone water theater, the region's first permanent show inspired by the spirit of Dubai.

Free WiFi is provided and free private parking is available on site.

The Dubai Fountain is 2.6 km from Hilton Dubai Al Habtoor City, while Galleria Shopping Mall is 2.7 km from the property and Al Feroow Omar Bin Al Khattab Mosque is 5.6 km away. Dubai International Airport is 13 km away. The hotel offers a free shuttle bus to various beach locations and Dubai Mall.



Sofitel Dubai Downtown (5*)

Location: Sheikh Zayed Rd - Downtown Dubai - Dubai

Contact: +9714 503 6666

Transfer Times:

Distance to Airport: 16 Min.

Distance to Expo 2020: 30 Min.

Located in the heart of Downtown Dubai, connected to The Dubai Mall and 10 minutes away from City Walk, Sofitel Dubai Downtown is an idyllic oasis that blends urban sophistication with refined luxury, features air-conditioned rooms and free private parking. Guests can enjoy the on-site bar and complimentary shuttle bus going to Kite Beach.

The rooms come with a flat-screen TV with satellite channels. Certain rooms include a sitting area where you can relax. Every room is equipped with a private bathroom. For your comfort, you will find bathrobes, free toiletries and a hairdryer.



المملكة العربية السعودية
Kingdom of Saudi Arabia
EXPO 2020 DUBAI

JW Marriott Marquis Hotel Dubai (5*)

Location: Sheikh Zayed Road, Business Bay, Dubai.

Contact: +9714 4140000

Transfer Times:

Distance to Airport: 18 Min.

Distance to Expo 2020: 27 Min.

Standard Room

2-night stay, Single Occupancy

Spread across two iconic towers, the spectacular JW Marriott Marquis Hotel features an enticing array of 15 award-winning restaurants, bars and lounges and the sublime Saray Spa and Health Club. For leisure travellers, the hotel is ideally placed between the Dubai Mall and Mall of the Emirates, next to Business Bay Metro Station and enjoys a spectacular location directly beside the new Dubai Water Canal extension. The JW Marriott Marquis Dubai offers free WiFi and an outdoor swimming pool.

Guests can have a dip in the outdoor swimming pool or a relaxing hammam experience at Saray Spa. Local excursions can be arranged by the hotel's tour desk. Valet parking is also available.

Wild Wadi Water Park can be reached by car in 20 minutes. Emirates Golf Club is 17km away. JW Marriott Marquis is a 25-minute drive from Dubai International Airport. The property offers a free shuttle bus to the Dubai Mall.



Double Tree By Hilton (4*)

KSA Specialist Program @ Expo 2020 Dubai

Location: Bay Square 5 - Business Bay - Dubai

Contact: +9714 551 1544

Transfer Times:

Distance to Airport: 14 Min.

Distance to Expo 2020: 36 Min.

Situated in Bay Square, a low-rise community just steps from downtown Dubai filled with shops, street side dining and businesses, Double Tree by Hilton Dubai - Business Bay offers a quirky home to discover this fascinating city. It offers a fitness center and an outdoor pool. Guests can enjoy free high speed WiFi throughout the property.

Guests can unwind in one of the spacious rooms or suites with complimentary WiFi. The rooms are a bit bigger, with a large walk-in shower in every bathroom. Some rooms come with a view of Burj Khalifa and downtown Dubai.

Guests can make use of the complimentary shuttle or walk just 10 minutes to Dubai's top attractions, including Burj Khalifa, The Dubai Mall, the Downtown Boulevard and Dubai Opera. We also offer complimentary shuttle to DIFC (Dubai International Financial Centre), DWTC (Dubai World Trade Centre), and the property is 3 minutes' ride from Business Bay Metro Station. The nearest airport is Dubai International Airport, 10km from Doubletree By Hilton Dubai - Business Bay.





Thanks

المملكة العربية السعودية
Kingdom of Saudi Arabia
EXPO 2020 DUBAI